



4A ST. MARYS BAY APARTMENTS THE PROMENADE IM9 5DB

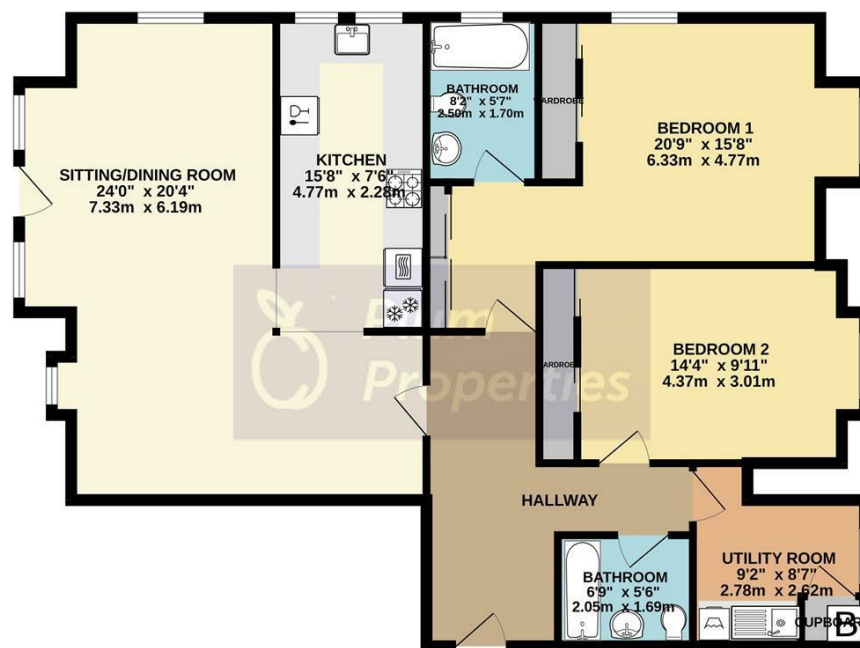
£1,500 PER MONTH

Available immediately on an unfurnished basis, a 2 bedroom apartment located in the heart of the popular village of Port St Mary, with all of the amenities from the village centre and harbour within an easy walk of the property.

 **Plum
Properties**

T: 01624 820600
E: hello@plumproperties.im
W: www.plumproperties.im

GROUND FLOOR
1111 sq.ft. (103.2 sq.m.) approx.



TOTAL FLOOR AREA: 1111 sq.ft. (103.2 sq.m.) approx.
Whilst every attempt has been made to ensure the accuracy of the floorplan contained herein, measurements of doors, windows, rooms and any other items are approximate and no responsibility is taken for any error, omission or mis-statement. This plan is for illustrative purposes only and should be used as such by any prospective purchaser. The services, systems and appliances shown have not been tested and no guarantee as to their operability or efficiency can be given.
Made with Metropix ©2024



Energy Efficiency Rating		
	Current	Potential
Very energy efficient - lower running costs		
(92 plus) A		
(81-91) B		
(69-80) C		
(55-68) D		
(39-54) E		
(21-38) F		
(1-20) G		
Not energy efficient - higher running costs		
England & Wales	EU Directive 2002/91/EC	



T: 01624 820600
E: hello@plumproperties.im
W: www.plumproperties.im

Head Office Lettings
1 Athol Street
Douglas
Isle Of Man
IM1 1LD

01624 820600
hello@plumproperties.im
<http://www.plumproperties.im>

Agents Note: Whilst every care has been taken to prepare these particulars, they are for guidance purposes only. All measurements are approximate and are for general guidance purposes only and whilst every care has been taken to ensure their accuracy, they should not be relied upon and potential buyers/tenants are advised to recheck the measurements